



HUNTLEY STREET

No. 54 Garden Apartment

TYERS • YAN





TYERS • YAN



An immaculately designed, fully serviced duplex Garden Apartment in Bloomsbury.

This brand new fully-serviced Garden Apartment has been meticulously designed for comfortable and stylish living.

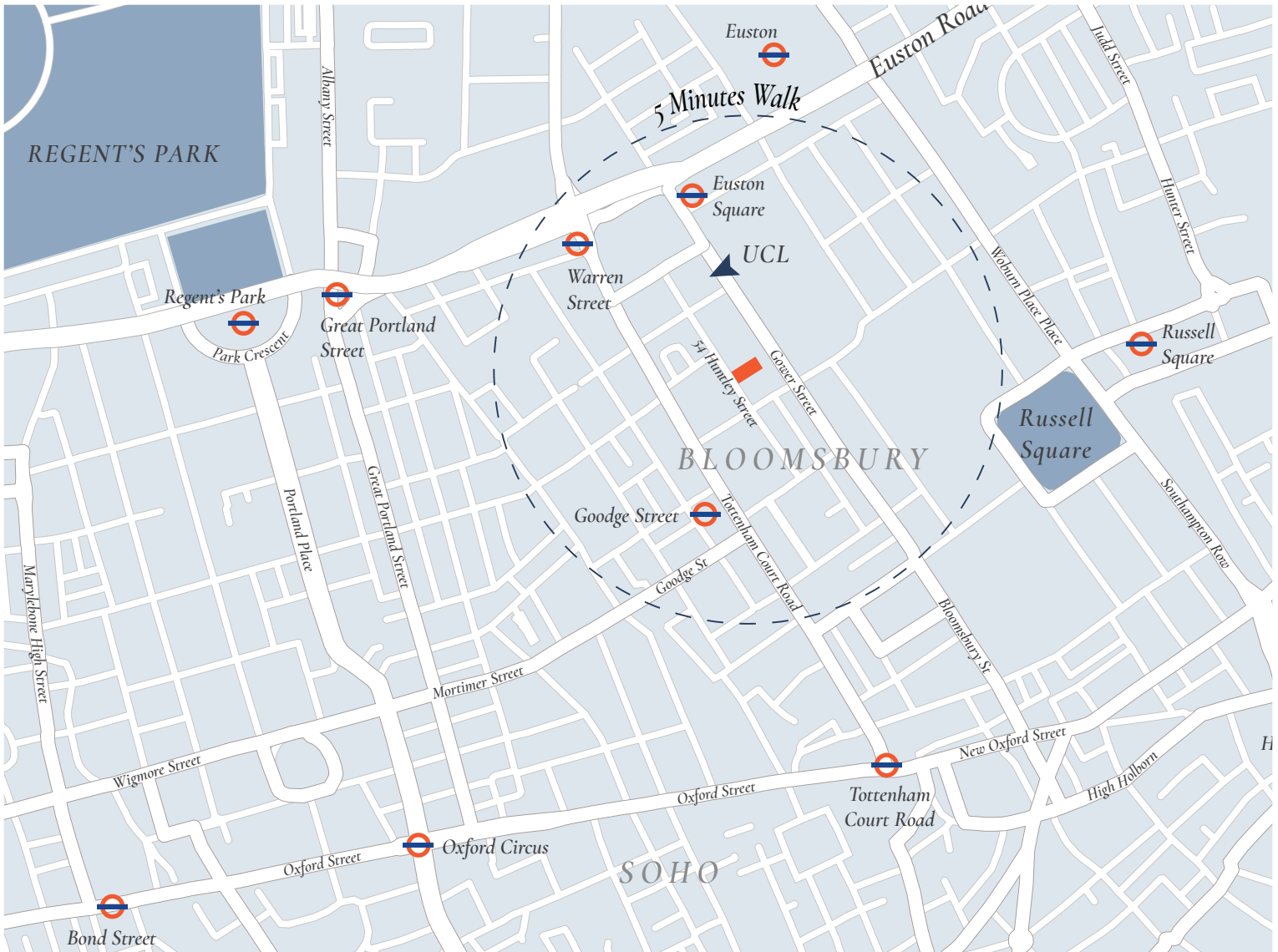
Every detail has been considered in creating an elegant and relaxing living space, with all bills taken care of, weekly housekeeping and a dedicated management team.

This modern apartment occupies the ground and lower ground floors of a sensitively restored Grade II listed building. Situated in historic Bloomsbury and in close proximity to internationally renowned restaurants and shops, the apartment is also only a short walk away from UCL, SOAS, Warren Street, Goodge Street and Euston station transport links.

- Fully furnished to a high standard
- Grand living room
- Open plan designer kitchen
- King-size master bed with en-suite shower
- Further double bedroom with en-suite shower
- Separate Guest Toilet
- Built-in wardrobes and additional storage
- Large Garden Terrace with dining
- All utility bills and Council Tax included
- Smart TV with TV Licence included
- High-speed internet with 4G backup
- Weekly Housekeeping service



TYERS • YAN





It's all in the detail.

Living

- Beautiful period cast-iron radiators
- State of the art electric heating
- App controlled temperature for each room
- Video entry system

Kitchen

- Designer kitchen with ample storage
- Siemens Double Oven and Ceramic Hob
- Siemens Dishwasher
- Siemens Washer / Dryer
- SMEG Kettle / Toaster
- Stone kitchen worktops

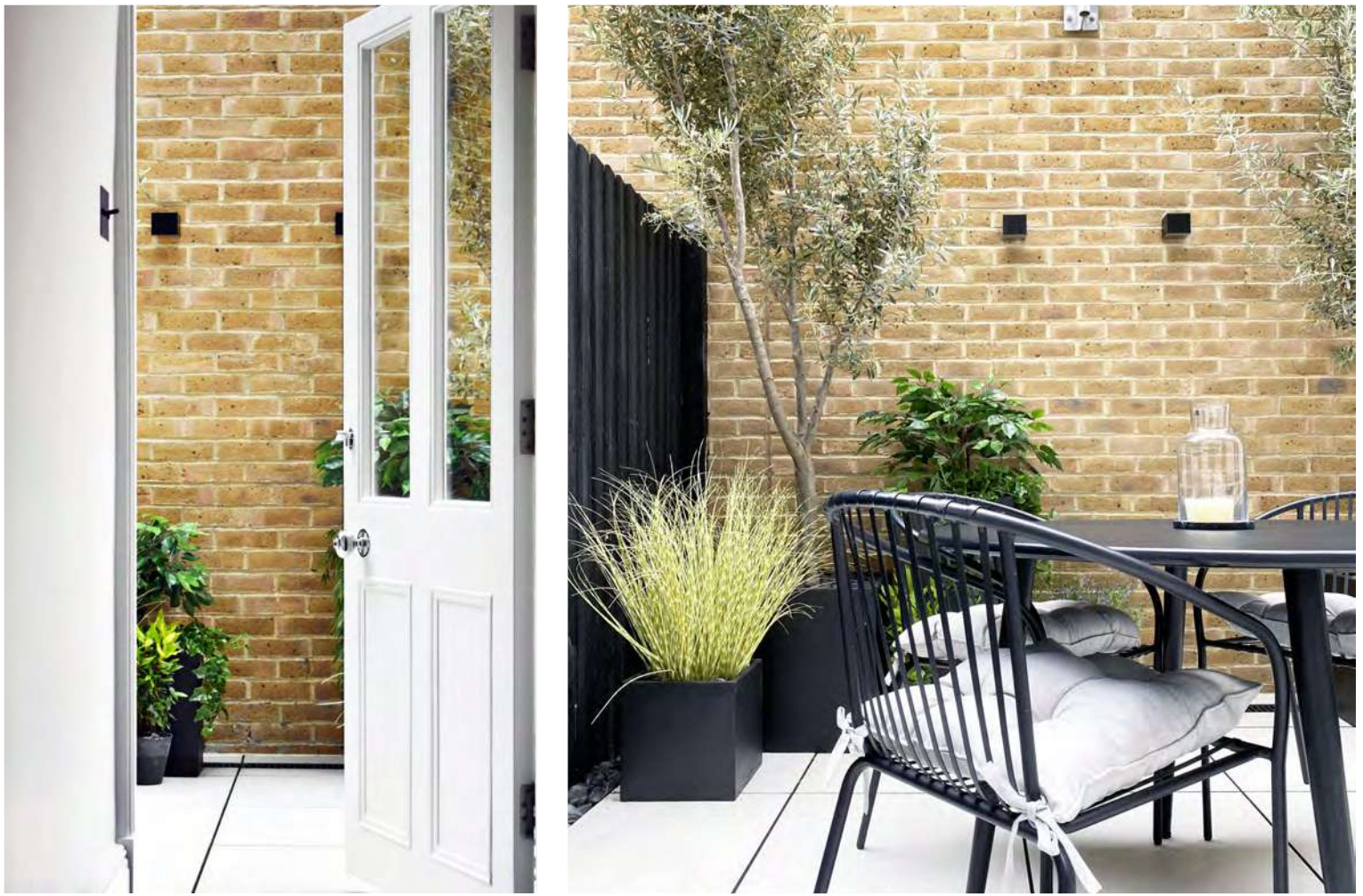
Bedroom Suites

- Ottoman style beds with under-bed storage
- Bespoke headboards with integrated lighting
- Large built-in wardrobes with lighting
- Underfloor heating in all bathrooms
- Heated bathroom mirrors





TYERS • YAN



TYERS • YAN







TYERS • YAN



50A
FLAT 2
2

54

L069 HWZ



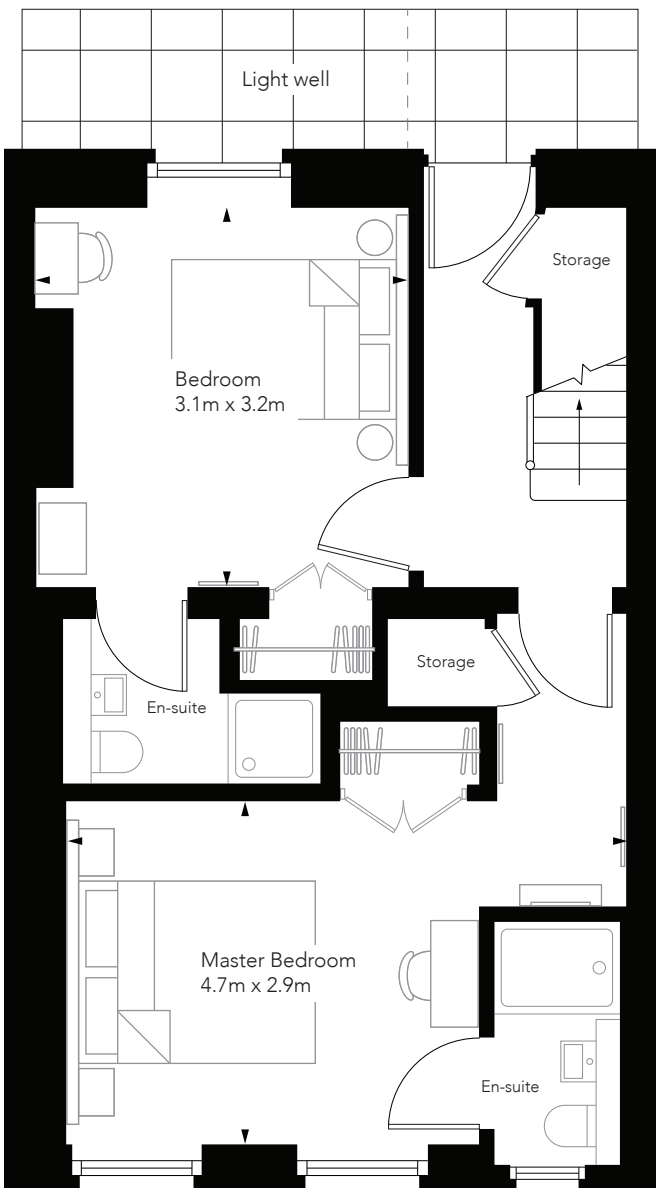
HUNTLEY STREET

No. 54 Garden Apartment

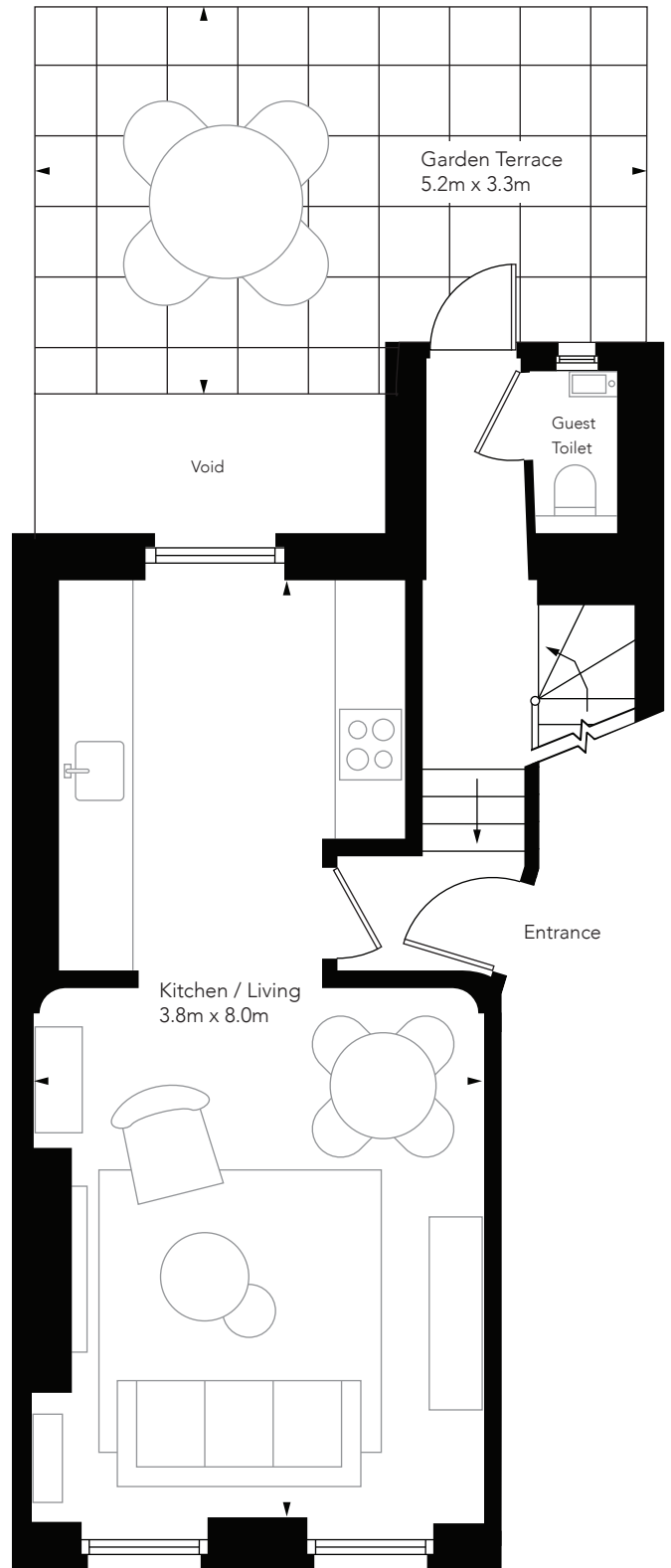


Gross Internal Area: 802sqft / 74.5sqm

External Area: 242sqft / 22.5sqm



Lower Ground Floor



Ground Floor

get in touch: stephanie.mason@tyersyanmanagement.com

TYERS • YAN



TYERS · YAN